

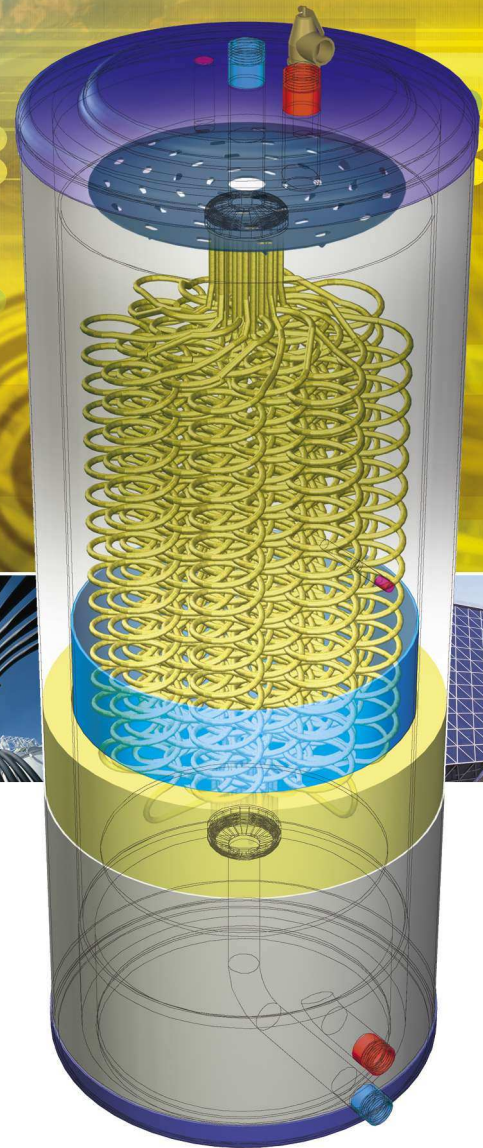


# The REX solution

Stainless Steel Indirect Water Heaters



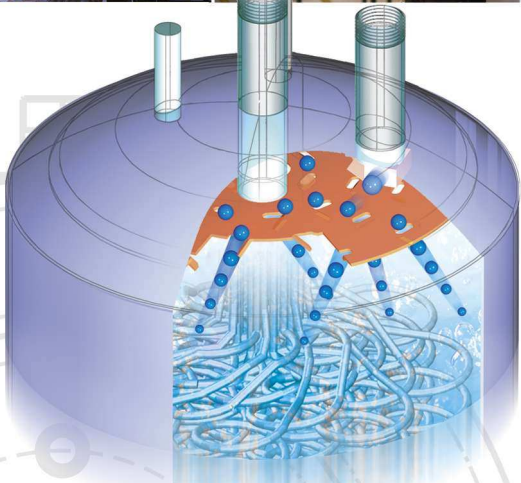
## Select REX stainless instantaneous indirect water heaters for a better way to heat domestic water



### Superior Hydrodynamics Improve Heat Transfer

The stainless steel distributor is the key to proper distribution of the boiler water over the coil tubes to give peak heat transfer as the hot water cascades through the coils, providing greater turbulence as it reaches the bottom distributor plate.

Our stainless steel indirect water heaters are ideal for use with hydronic, radiant heat, and steam heating systems.



### Instant Life—Long Cost Savings with Improved System Performance

The new generation REX water heaters are engineered for high heating efficiency. REX heaters use the boiler to heat domestic water instantly upon demand. As the boiler water enters the tank (not the coils) it is stored, ready for a domestic water call. The REX heater also acts as a buffer tank to eliminate boiler short cycling. The boiler water is circulated through the REX heater in a closed loop system extending boiler life.

REX heater coils last longer as a result of soft heat transfer of boiler water rather than direct flame type transfer used in conventional heaters.

The REX indirect instantaneous system offers high efficiency, long life and an economical way of heating domestic water, as there is no stagnant water in the coils. It virtually eliminates bacterial growth.

Constructed from stainless steel, the REX water heaters are built to last. All of the REX tanks are designed to be used for modular installations and all will fit through a 30 inch doorway.

The REX heaters are an efficient solution for new projects and are ideal for retrofit applications to improve existing system performance and reduce installation costs.

Characteristics	REX150	REX190	REX300	REX435
Tank Capacity (gal)	40	50	80	115
Heating Surface Area (sqft)	34.4	39.9	39.9	72.9
<b>Connections (inch)</b>				
Domestic - NPT	1"	1-1/2"	1-1/2"	2"
Boiler - NPT	1"	1-1/2"	1-1/2"	2"
<b>Dimensions</b>				
Diameter (inch)	19.8"	23.4"	23.4"	28.1"
Height (inch)	61.7"	51.2"	75.7"	77.0"
Weight (lbs)	102	118	180	285

### Coil Side Pressure Drop (PSI)

Flow (GPM)	5	10	15	20	25	30
REX 150	1.50	5.30	12.0	-	-	-
REX 190	1.10	3.90	8.70	16.2	-	-
REX 300	1.10	3.90	8.70	16.2	-	-
REX 435	0.10	1.00	2.25	4.50	7.0	11.25

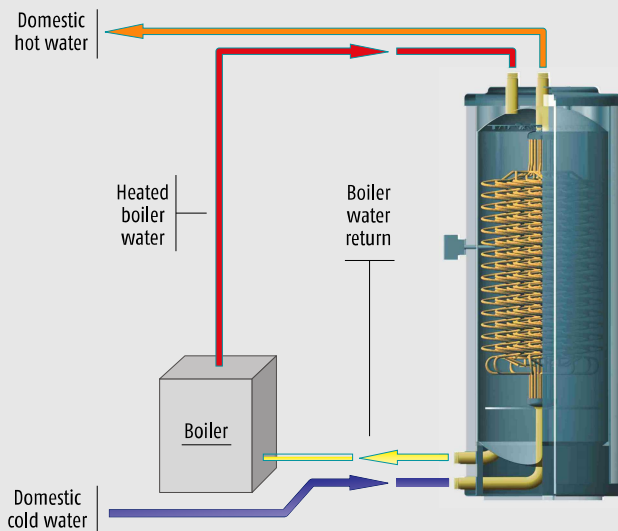
### Tank Side Pressure Drop (PSI)

Flow (GPM)	10	20	30	40	60	100
REX 150	0.62	2.53	5.75	-	-	-
REX 190	0.10	0.40	0.90	1.60	-	-
REX 300	0.11	0.44	1.00	1.79	-	-
REX 435	0.05	0.18	0.40	0.72	1.15	3.00

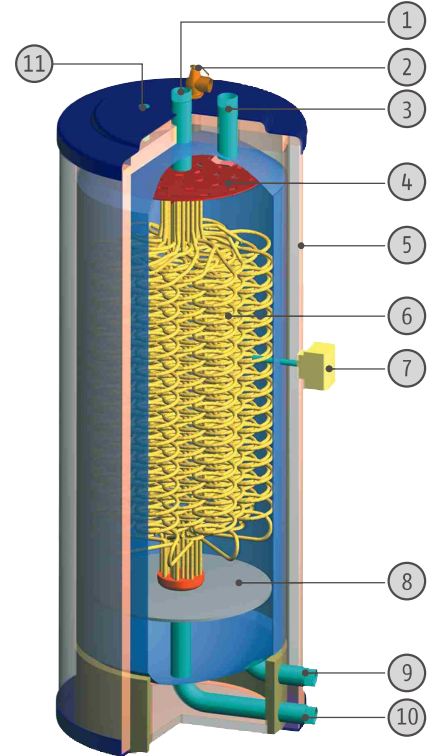
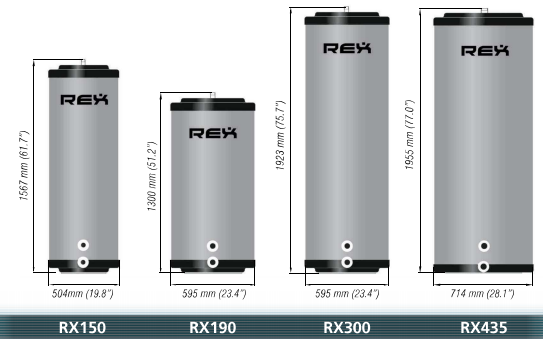
### REX Performance

BTU/HR	Flow (GPH) @ 110°F			Flow (GPH) @ 140°F			Flow (GPH) @ 180°F		
	RX150	RX190 RX300	RX435	RX150	RX190 RX300	RX435	RX150	RX190 RX300	RX435
50,000	87	87	87	60	60	60	43	43	46
100,000	171	171	171	120	120	120	80	82	85
150,000	257	257	257	180	180	180	120	124	128
200,000	348	348	348	244	244	244	162	162	174
250,000	428	428	428	300	300	300	200	206	214
300,000	514	514	514	360	360	360	-	248	257
400,000	-	685	685	-	480	480	-	331	342
500,000	-	-	857	-	600	600	-	-	400
600,000	-	-	1028	-	-	720	-	-	480
700,000	-	-	-	-	-	840	-	-	560
800,000	-	-	-	-	-	960	-	-	640
900,000	-	-	-	-	-	1080	-	-	-

Based on incoming domestic water @ 40°F and Boiler water @ 180°F and leaving Boiler water @ 160°F.



Available in 4 models



- 1 hot water out
- 2 safety valve
- 3 boiler water in
- 4 boiler water distributor
- 5 polypropylene jacket
- 6 heating coils
- 7 aquastat
- 8 cold water distributor
- 9 boiler water out
- 10 cold water in
- 11 P/T



AIC Inc.  
 2899 Portland Drive  
 Oakville, Ontario  
 L6H 5S4, Canada  
[www.aicheatexchangers.net](http://www.aicheatexchangers.net)